

# RM-423

## Rackmount Chassis

### Specification

<b>Model Name</b>	RM-423
<b>Type</b>	4U Rackmount
<b>Mother Board Form Factor</b>	ATX - 12" * 9.6"
<b>Dimension (D*W*H)</b>	445 * 430 * 175 mm
<b>Carton Size (mm)</b>	590 * 565 * 290 mm

<b>Drive Bays</b>	Ext. 5.25"	3
	Int. 3.5"	1
	Ext. 3.5"	4
	Slim ODD	1

**Expansion Slots** 7

**Front I/O Ports** 2 \* USB 3.0

**Cooling Fans** Standard 1 \* 12 cm, 1 \* 8 cm fans,  
Optional 1 \* 8 cm fan

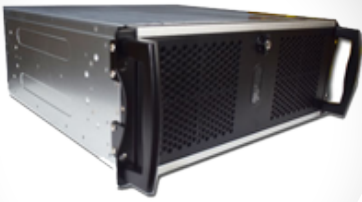
**Rackmount Kit** Optional

**Color** Black with Silver

**Compatible SMPS**  
FSP400-60GHC  
FSP500-60GHC  
FSP550-50ERS  
FSP600-50HPN  
FSP700-50HPN  
FSP700-80PSA  
HydroG-750  
FSP800-50ERS  
PT-1200FM  
FSP1200-50ERS  
FSP500-80EVMR

**Net Weight** 10 KG

**Special Features** Intrusion Switch



**Prime Source Technologies Pvt. Ltd**

[www.primesource.in](http://www.primesource.in)